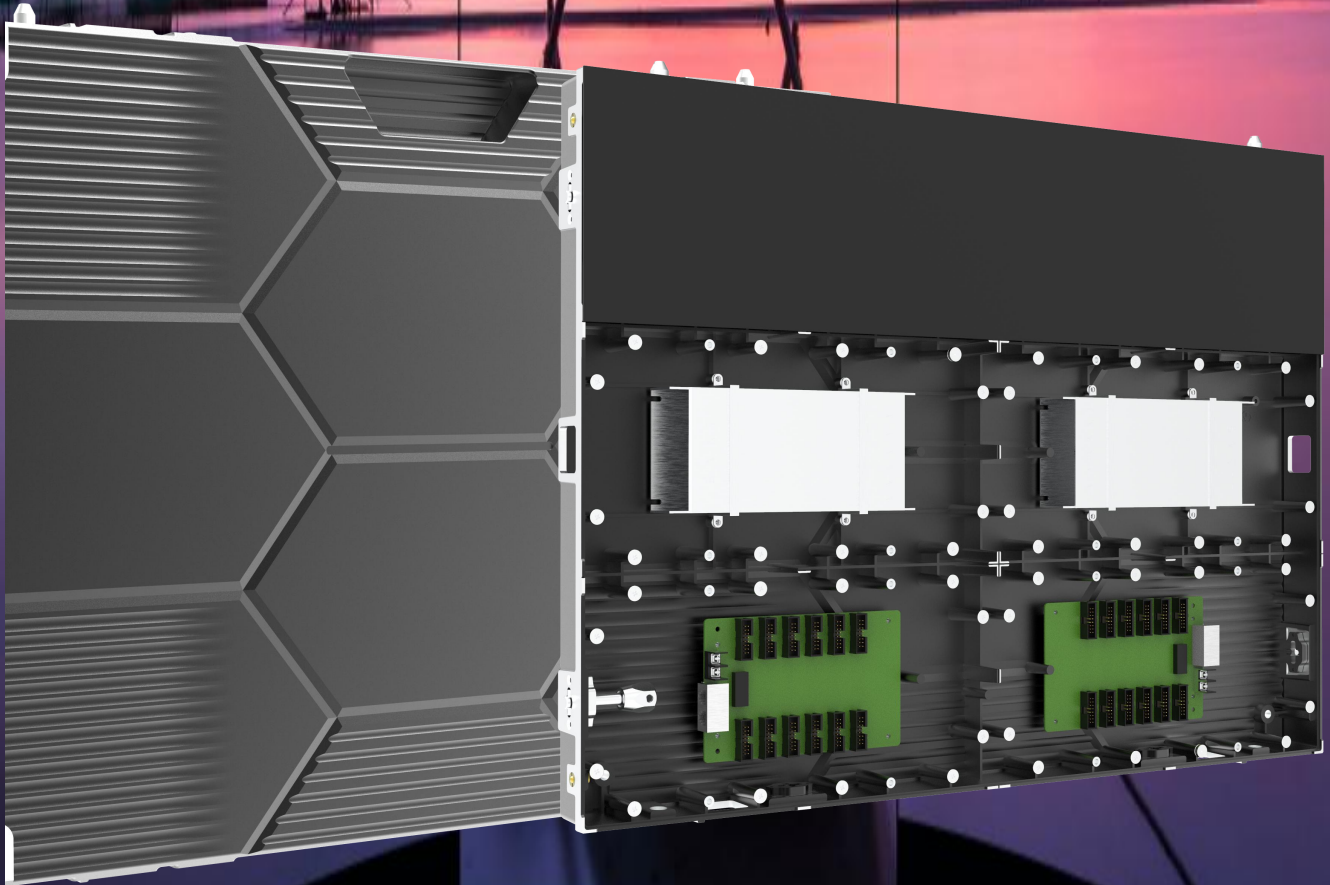




FX SERIES

SMD indoor LED Display Specification



**Curved
Available**

Rectangular Splicing

6.8KG

Light Weight

640X480

Size Design

**Front
Access**

Wall Mounting

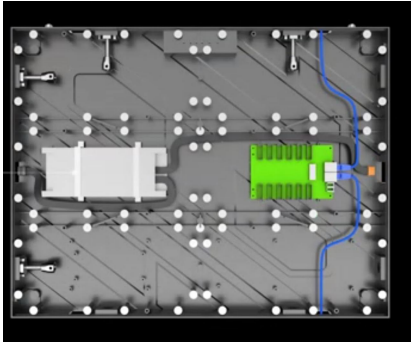
SHENZHEN 3RGBLED TECHNOLOGY CO.,LTD

[Email:manager@3rgbled.com](mailto:manager@3rgbled.com)



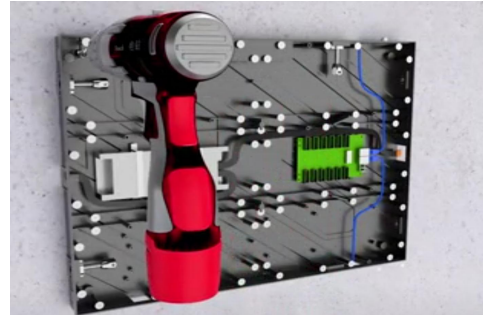
Light And Slim

Light weight and slim die casting aluminum.



3 Free frame instllation

Dierectly to wall



Rectangular Splicing

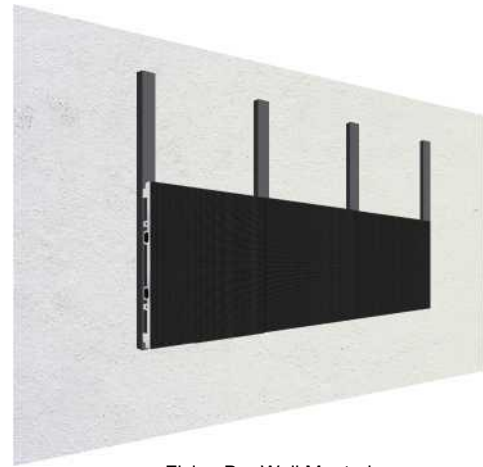
Cabinet can be fitted with 90 degree right angle splicing function.



Splicing

Wall mounting installation with Bar

Using wall mounting bracket for installation.



Fixing Bar Wall Mouted

Technical Specifications

ITEM	1.86	2	2.5
Pixel Pitch (mm)	1.86	2	2.5
Module Size (mm)	320x160	320x160	320x160
Module resolution (dots)	172x86	160x80	128*64
Weight (kg/cabinet)	6.8	6.8	6.8
Scan	43	40	32
Cabinet size (mm)	640x480	640x480	640x480
Cabinet resolution (dots)	374X258	320X240	256x192
Brightness (nits)	600 - 800	600 - 800	600 - 800
Gray Scale (bit)	16	16	16
Best Viewing Distance (m)	1	2	3
Max./Ave. Power Consumption(w/m²)	680/250	685/250	650/250
Refresh Rate (Hz)	>3840	>3840	>3840